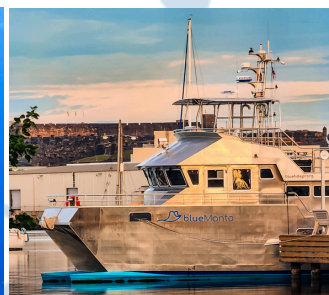
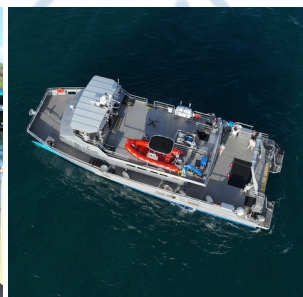
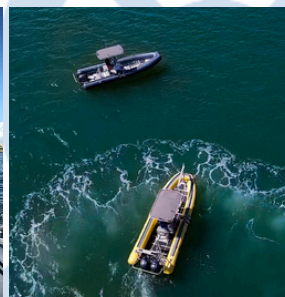
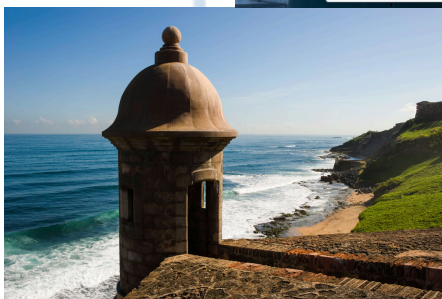
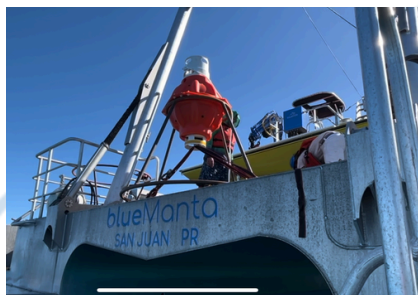


CAPABILITY STATEMENT 2024



Reviewed by
Danixa Rivera Merced
Executive Director

Prepared by
Benny Bonet Santiago
Executive Coordinator



BACKGROUND



Bluetide Puerto Rico, Inc. (BTPR) is a 501(c)3, Non-Profit Organization based in Puerto Rico since 2018. Our MISSION is; to influence, innovate, support, and increase the economic impacts and eco-responsible developments for a sustainable “Blue Economy” in Puerto Rico and the US Caribbean. BTPR’s objective is to plan, design, and implement “Blue Economic” initiatives to expand Puerto Rico’s ocean-dependent activities in an integrated and cross-collaborative manner to attain progressive marine and maritime economic research and development into the future, by accelerating ocean reliant commercial activities.

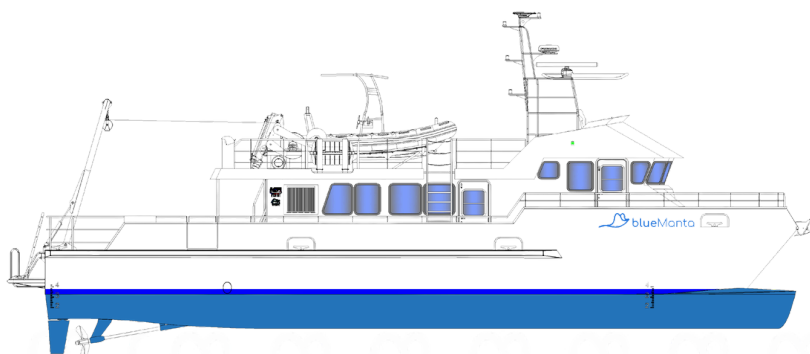
BTPR’s priority is to support the workforce development of specialized jobs by providing capacity building, training and certifications. The food and recreational sustainability programs seek to provide accessible training and assistance to coastal communities and fishermen, creating sources of resilient economic diversification. In addition, BTPR will focus on establishing a disaster preparedness platform for the development of blue energy as well as habitat restoration.



R/V Blue Manta

Vessel Specifications

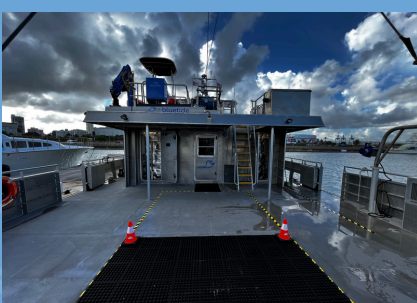
- Length..... 76 Feet OAL
- Beam..... 26.5 Feet
- Draft..... 6.5 Feet
- Crew..... 3
- Passengers..... 6 Live Aboard
- Engines..... 2 x CAT C18 "D" ACERT, Tier 3
- Rating..... 803 bhp/2100 rpm
- Propulsion..... Twin Fixed Pitch Props
- Fuel..... 1500 Gallons
- Speed..... 20 knots Cruise, 3 Knots Survey





R/V Blue Manta

Core Capabilities



- **Wet/Dry laboratory spaces:**
 - Multiple storage
 - Computer rack and mounts
 - Clean power outlets
 - RAW/Fresh Water Supply
- **Universal Sonar Mount with MEGATOWER Base:**
 - X-POLE WELDMENT, 32", 6" OD
 - FOIL, 4.5" X 84" INDEXED
- **Telescopic Deck Crane:**
 - Maximum reach 20' ft.
 - Capacity at 12' ft: 1829 lbs
 - Capacity at 5' ft: 4409 lbs
- **J-Frame/Hauler:**
 - Reach: 5' ft
 - 500 lbs SWL
 - Electric block
- **A-Frame:**
 - 5000 lbs total load.
 - Extends at least 8' ft aft.
 - Hauling Winch:
 - 750m of 3/8" Amsteel Blue softline
 - Conducting wire:
 - 400m Rochester #A301592 0.322"
- **RHIB Tender/Runner boat:**
 - Length: 16' ft
 - Capacity: 6 persons
 - Aft Tow Post
 - 50HP Engine



OUR SERVICES

MARINE OPERATIONS

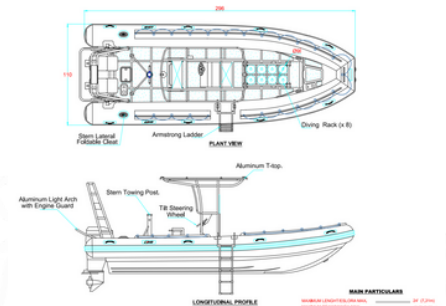
The R/V Blue Manta is equipped with an extensive array of on-board instruments designed to support, collect, and analyse scientific data from both the ocean's surface and its depths. Key systems include cranes, winches, and an aft-mounted A-frame, which are critical for deploying and recovering heavy scientific equipment such as: Remotely operated vehicles (ROVs), Uncrewed surface vessel (USV), benthic landers, CTD-rosettes, moorings, and buoys, among other instruments.

These operations are efficiently managed from the vessel's wet and dry laboratories, where instruments can be closely monitored and operated. In addition, the ship is outfitted with advanced navigational sensors and systems, enabling precise surveys and complex scientific tasks.

Rigid Hull Inflatable boats

The Rigid Hull Inflatable Boats (RHIBs) at Bluetide Puerto Rico play a crucial role in supporting the operations of the R/V Blue Manta and are essential for smaller research initiatives. These versatile vessels are used for ROV deployments, scuba diving operations, and data collection in areas where larger vessels cannot access. Additionally, the RHIBs serve as platforms for marine education, providing hands-on experiences for researchers and students in oceanographic studies. Their agility and durability make them ideal for a wide range of marine activities, enhancing both research and educational missions.

- Length: 24'
- Beam: 9'
- Draft: 1.5'
- Power: Twin 115HP
- Hull Material: Aluminum
- Max capacity: 6 person

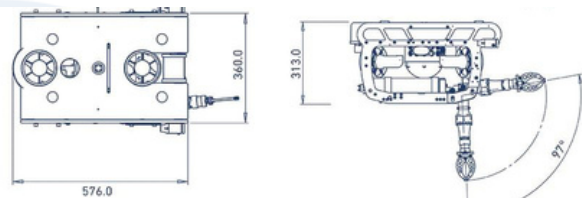
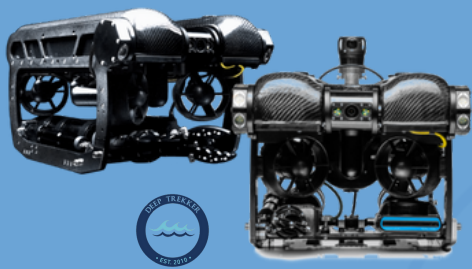




OUR SERVICES

Specialized Equipment

Remote Operated Vehicles (ROVs)



- Depth rating: 305 m (1000 ft)
- Rotating tool platform
- 7-inch, sunlight-readable, Controller
- 200 Degree Rotating 4K camera head
- 1000 Lumens LED Floodlights

Unmanned Aerial Vehicles (UAVs)

- 5 km Max Transmission
- 55-min Max Flight Time
- 6 Directional Sensing & Positioning.
- Primary Flight Display.
- IP45 Rating.
- -20°C to 50°C Operating Temperature.
- Hot-swappable Battery.
- UAV Health Management System.

Available Cameras



- Zenmuse L1 - Lidar+ RGB
- Zenmuse XT2 Thermal Camera
- Zenmuse H20
- Micasense RedEdge-P (Multispectral)

At Bluetide Puerto Rico Inc., we utilise specialised equipment to provide services such as research, technical work, and data collection. Please note that our organisation is not sponsored by any brand or company. The equipment and its features listed are integral tools used by our team to deliver these services, ensuring the highest standards in marine and maritime operations. We do not sell or distribute this equipment.

